



The Secret
of
Prolific Farms

Seeds Catalog



Seed list

Wheat

LG Apilco	3
Anapurna	4
Nudel	5
LG Acorazado	6
Nora	7
Nadia	8
Adineh	9

Barley

Waxyima	10
Wilma	11
Arman	12
Pars	12
Kourosh	14

Canola

Marathon	15
Deffusion	16
Trapper	17

Garou	18
Rohan	19
Angelico	20
Anniston	21
Architect	22

Maize

Aveline FAO 700	23
LG 36.07	24
Gazda (FAO 450)	25
Massil (FAO 610)	26
Maxima (FAO 580)	27

Vegetable

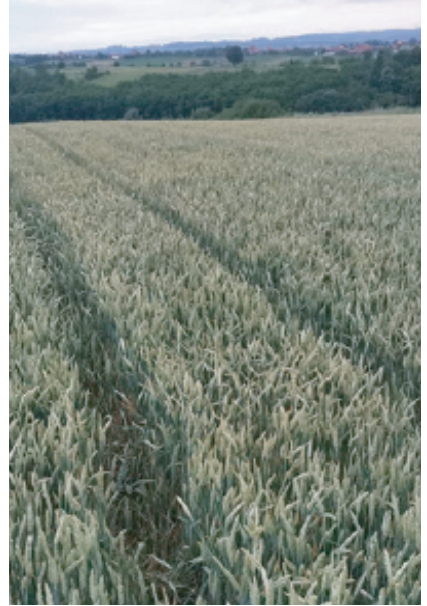
Squash ELLA (YZ2402)	28
Eggplant ISABELLA (YE2325)	29
Melon LUCY (YM2492)	30
Cucumber SOPHIA (YZ1359)	31





— LG Apilco

Growth Type	Winter
Plant Height	Medium to High
Average of A Thousand Kernel Weight (TKW)	High
Lodging Resistance	Relatively Resistant
Yellow Rust Resistance	Tolerant
Brown Rust Resistance	Relatively Sensitive
Black Rust Resistance (race Ug99)	Resistant
Average Number of Days to Physiological Maturity	230 Days
Seed Shattering Status	Resistant
Seed Protein	High
Baking Quality	High



This French variety of bread wheat is suitable for cultivation in temperate cold and temperate regions of the country. The LG Apilco variety is one of the registered varieties of the French company Limagrain which Arman Sabz Adineh Company has recently started importing its parent seed and promulgating and distributing it in the country. This variety has a winter growth type. It has a good yield, awnless spike and is resistant to cold, lodging, and diseases such as yellow rust and powdery mildew existing in Iran and European varieties.



Anapurna

Growth Type	Winter
Plant Height	High
Seed Color	Dark Yellow
Average of A Thousand Kernel Weight (TKW)	40- 45
Lodging Resistance	Resistant
Yellow Rust Resistance	Resistant
Brown Rust Resistance	Semi Resistant
Black Rust Resistance (race Ug99)	Semi Resistant
Average Number of Days to Physiological Maturity	220 days
Seed Shattering Status	Resistant
Baking Quality	Excellent



This French variety of bread wheat is suitable for cold and temperate cold regions of the country.

The Anapurna variety is one of the registered varieties of the French company Limagrain which Arman Sabz Adineh Company has recently started importing its parent seed and promulgating and distributing it in the country. The key agronomic characteristics of this variety include a winter growth type, medium to late maturing, spike with awn, resistance to lodging and shattering, high yield potential, good cold tolerance, and resistance to diseases such as yellow rust and powdery mildew.





Nudel

Growth Type	Facultative
Plant Height	Medium to High
Seed Color	Yellow
Average of A Thousand Kernel Weight (TKW)	38- 41
Lodging Resistance	Relatively Resistant
Yellow Rust Resistance	Tolerant
Brown Rust Resistance	Tolerant
Black Rust Resistance (race Ug99)	Tolerant
Average Number of Days to Physiological Maturity	190 days
Seed Shattering Status	Resistant
Baking quality	Excellent



This French variety of bread wheat is suitable for cultivation in temperate cold and temperate regions of the country. The Nudel variety is one of the registered varieties of the French company Limagrain which Arman Sabz Adineh Company has recently started importing its parent seed and promulgating and distributing it in the country. This variety has a facultative (early winter) growth type. It also has a high average yield, spike with awn, amber seed, grain hardness suitable for flour production, tolerance to yellow rust races existing in Iran and new European races, relative resistance to European brown rust races, resistance to leaf rust races which are not identified. Very high TW, relative resistance to waterlogging conditions, are among the outstanding features of this French bread wheat.



— LG Acorazado

Growth Type	Spring
Plant Height	Medium to High
Seed Color	Dark Yellow
Average of A Thousand Kernel Weight (TKW)	40- 43
Lodging Resistance	Resistant
Yellow Rust Resistance	Resistant
Brown Rust Resistance	Resistant
Black Rust Resistance (race Ug99)	Resistant
Average Number of Days to Physiological Maturity	150 Days
Seed Shattering Status	Resistant
Baking Quality	Great



This French variety of bread wheat is suitable for cultivation in temperate warm and warm regions of the country.

The LG Acorazado variety is one of the registered varieties of the French company Limagrain. Arman Sabz Adineh Company has imported its parent seed in recent years and promulgating and distributing it in the country. This variety has a spring growth type and is suitable for cultivation in temperate warm, warm, and dry regions of the country.

Prominent agricultural characteristics of this variety include good and suitable yield, early maturity, relatively good tolerance to end-of-season heat, spike with awn, grain hardness great for flour production, very high TW, resistance to yellow rust races existing in Iran and new European races, relative resistance to European brown rust races, resistance to leaf rust races which are not identified in Iran, and high resistance to waterlogging conditions in flood irrigation. In the 2019-2020 agricultural year, when the disease of rust caused significant damage in Khuzestan province, the LG Acorazado variety showed very high resistance to rust compared to other common varieties in the region. Cultivation of this variety is recommended in moderate warm, coastal areas of the Caspian Sea, and warm and dry regions in the south of the country, especially in areas where rust is a limiting and damaging factor.



Nora

Growth Type	Facultative
Average Height of Bush	Medium to High
Lodging Resistance	Semi Resistant
Yellow Rust Resistance	Tolerant
Brown Rust Resistance	Tolerant
Seed Falling Status	Resistant
Baking Quality	Great



This Bread wheat with facultative growth type is suitable for cultivation in Moderate and temperate cold regions of the country.

Nora wheat variety is one of the commercialized varieties of Fadak Adineh Agro-Industry Complex which was confirmed in the winter of 2024 at Variety Introduction Committee of Seed and Plant Certification and Registration Institute.

Its important features include awn spikelet, high yield average, low to medium thousand kernel weight, and high tillering.

Nadia

Growth Type	Winter
Average Height of Bush	High
Resistance to Lodging	Relatively Resistant
Resistance to Yellow Rust	Relatively Resistant
Resistance to Brown Rust	Relatively Resistant



This Bread wheat with winter growth type, suitable for cultivation in cold and temperate cold regions of The country.

Nadia Variety is one of the commercialized varieties of Fadak Adineh Agro-Industry Complex which was confirmed in the winter of 2024 at Variety Introduction Committee of Seed and Plant Certification and Registration Institute.

This variety is cultivated in areas with cold and temperate cold climates.

Agricultural important features of this variety include, winter growth type, awn spikelet, relatively high resistance to lodging, high yield, relatively high resistance to yellow and brown rust diseases and powdery mildew.



— Adineh

Growth Type	Winter
Average of A Thousand Kernel Weight (TKW)	High
Resistance to Lodging	Relatively Resistant
Resistance to Yellow Rust	Resistant
Resistance to Brown Rust	Tolerant
Resistance to <i>Septoria</i>	Tolerant



This Bread wheat variety is suitable for cultivation in cold and temperate cold regions of the Country. This wheat variety is one of the commercialized varieties of Fadak Adineh Agro-Industry Complex which was confirmed in the winter of 2024 at Variety Introduction Committee of Seed and Plant Certification and Registration Institute.

Important features of this variety include an awnless Spikelet, relatively resistance to lodging and powdery mildew, good resistance to yellow rust, brown rust and *Septoria*, and high thousand kernel weight (TKW).

Waxyma

Growth Type	Winter
Plant Height	Medium to High
Seed Color	Light Yellow
Average of Weight of A Thousand Seeds	High
Resistance to Lodging	Tolerant
Resistance to Yellow Rust	Relatively Resistant
Resistance to Brown Rust	Relatively Resistant
Resistance to Black Rust (race Ug99)	Resistant
Average Number of Days to Physiological Maturity	220 Days
Seed Shattering Status	Resistant



This German 6-Row barley variety is suitable for cultivation in cold and temperate cold regions of the country. Waxyma is one of the most important registered varieties of Dieckmann, a German company, which Arman Sabz Adineh Company has recently started importing its parent seed and promulgating and distributing it in the country. Important characteristics of this variety include winter growth type, high seed yield, medium to late heading time, tall awn, short to medium spike length, and medium density of spikes.





Wilma

Growth Type	Spring
Plant Height	Medium
Seed Color	Light Yellow
Average of Weight of A Thousand Seeds	High
Resistance to Lodging	Semi-resistant
Resistance to Yellow Rust	Resistant
Resistance to Brown Rust	Resistant
Resistance to Black Rust (race Ug99)	Resistant
Average Number of Days to Physiological Maturity	150 Days
Seed Shattering Status	Resistant



This Austrian two-row barley variety is suitable for cultivation in temperate warm, hot and dry regions of the country. Wilma is one of the most important registered varieties of SAATBAU LINZ, an Austrian company. Arman Sabz Adineh Company that has recently started importing its parent seed and promulgating and distributing it in the country. Important characteristics of this variety include early spring growth type, medium height, early-maturing, suitable density of 280 to 350 plants per square meter, high seed yield potential, high protein content in seed, appropriate specific weight, good resistance to lodging, strong stem, good resistance to fungal diseases and rusts, especially leaf spotting.



Arman

Growth Type	Winter
Average of Thousand Kernel Weight (g)	45
Resistance to Lodging	Resistant
Resistance to Brown Rust	Tolerant
Resistance to Powdery Mildew	Tolerant
Kernel Yield	Very High



This six row water barely variety is suitable for cultivation in temperate cold and cold regions of the country.

Arman Barely is one of the commercialized varieties of Fadak Adineh Agro-Industry Complex which was confirmed in winter of 2024 at Variety Introduction Committee of Seed and Plant Certification and Registration Institute.

Some of the superior specifications of Arman barely variety include very high yield, early maturity, relatively good resistance to lodging, medium height and resistance to brown rust and powdery mildew.



Pars

Growth Type	Winter
Plant Height	Medium
Average of Thousand Kernel Weight	High
Resistance to Lodging	Tolerant
Resistance to Brown Rust	Tolerant
Protein (%)	High



This two row water barely variety is suitable for cultivation in cold and temperate cold regions of the Country.

Pars barely variety is one of the commercialized varieties of Fadak Adineh Agro-Industry Complex which was confirmed in winter of 2024 at Variety Introduction Committee of Seed and Plant Certification and Registration Institute.

Important features of this variety include high yield in dry region, medium height, relatively high resistance to lodging, medium maturity, suitable quality for malting.

Kourosh

Growth Type	Spring
Plant Height	Medium to High
Average of Thousand Kernel Weight	High
Resistance to Brown Rust	Resistant
Average Number of Day to Physiologic Ripening	156
Seed Shattering Status	Resistant



This two row water barely variety with spring growth type is suitable for cultivation in temperate warm, hot and dry regions of the country.

The Kourosh barely variety is one of the commercialized varieties of the Fadak Adineh Agro-Industry Complex which was confirmed in winter of 2024 Variety Introduction Committee of Seed and Plant Certification and Registration Institute

Important features of this variety include early maturing, medium to high height, high seed yield, relatively high resistance to lodging and usual fungal diseases.



Marathon

Variety	Marathon
Seed Production Company	DVS - Germany
Growth Type	Winter
Physiological Maturity	Medium
Seed Yield	Very High
Plant Density per Square Meter	40-50
Other Characteristics	Very Desirable Winter Hardiness Relative Resistance to Drought Stress High Initial Growth Rate Resistant to Lodging



Deffusion

Variety	Deffusion
Seed Production Company	DVS - Germany
Growth Type	Winter
Physiological Maturity	Medium
Seed Yield	Very High
Plant Density per Square Meter	40-50
Other Characteristics	Very Desirable Winter Hardiness Relative Resistance to Drought Stress High Branching Resistant to Lodging





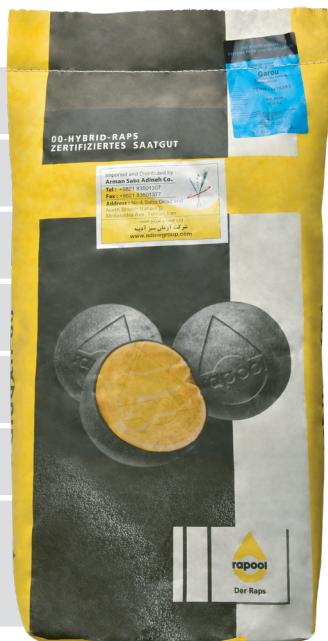
Trapper

Variety	Trapper
Seed Production Company	NPZ - Germany
Growth Type	Spring
Physiological Maturity	Early
Seed Yield	Very High
Plant Density per Square Meter	50-60
Other Characteristics	Short to Medium Height Resistant to Lodging, <i>Sclerotinia sclerotiorum</i> and Silique Shattering



Garou

Variety	Garou
Seed Production Company	NPZ - Germany
Growth Type	Winter
Physiological Maturity	Medium
Seed Yield	Very High
Plant Density per Square Meter	40-50
Other Characteristics	Very Desirable Winter Hardiness Relative Resistance to Drought Stress Suitable for Delayed Planting Resistant to Lodging, Early Flowering






Rohan

Variety	Rohan
Seed Production Company	NPZ - Germany
Growth Type	Winter
Physiological Maturity	Medium
Seed Yield	Very High
Plant Density per Square Meter	40-50
Other Characteristics	Resistant to Lodging, Early Flowering Strong Root System




— Angelico

Variety	Angelico	
Seed Production Company	Limagrain - France	
Growth Type	Winter	
Physiological Maturity	Medium	
Seed Yield	Very High	
Plant Density per Square Meter	40-50	
Other Characteristics	Resistant to Lodging Flexible to Planting Date Medium to High Plant Height Resistant to Silique Shattering High Thousand Grain Weight Resistant to <i>Sclerotinia sclerotiorum</i>	



Anniston

Variety	Anniston
Seed Production Company	Limagrain - France
Growth Type	Winter
Physiological Maturity	Medium
Seed Yield	Very High
Plant Density per Square Meter	40-50
Other Characteristics	Resistant to Lodging Moderate to High Plant Height Resistant to Siliques Shattering Early Flowering in Spring Relatively Fast Growth in Autumn Resistant to <i>Sclerotinia sclerotiorum</i>



Architect

Variety	Architect
Seed Production Company	Limagrain - France
Growth Type	Winter
Physiological Maturity	Medium
Seed Yield	Very High
Plant Density per Square Meter	40-50
Other Characteristics	Resistant to Lodging Moderate to High Plant Height Resistant to Silique Shattering Suitable Growth Rate in Autumn Resistant to <i>Sclerotinia sclerotiorum</i>





— Aveline (FAO 700)

Appearance Specification	Dent Grain, 16-18 Row
Variety Specification	Silage Hybrid High Primary Germination Single Cross Late-maturing High Yield
Plant Resistance	Resistant to Lodging, <i>Fusarium</i> , <i>Ustilago maydis</i>
Plant Density	75000 to 85000 Plants per Hectare



Limagrain LG 36.07

Appearance Specification	Dent Grain, 16-18 Row Seeds on Each Maize
Variety Specification	Hybrid Single Cross Medium-maturing Grain Usage High Yield
Plant Resistance	Resistant to <i>Fusarium</i> , <i>Bipolaris zeicola</i>
Plant Density	60000 to 70000 Plants per Hectare





Gazda (FAO 450)

Appearance Specification	Dent Grain, 16-18 Rows Seeds on Each Maize
Variety Specification	Hybrid High Primary Germination Suitable for Grain Production Early-maturing High Yield
Plant Resistance	Resistant to Environmental Stress, Diseases and Salinity
Plant Density	60000 to 70000 Plants per Hectare



— Massil (FAO 610)

Appearance Specification	Dent Grain, 16-17 Row Seeds on Each Maize
Variety Specification	Hybrid Triway Cross Medium-maturing High Primary Germination High Yield
Plant Resistance	Resistant to Environmental Stress and Diseases
Plant Density	70000 to 80000 Plants per Hectare





Maxima (FAO 580)

Appearance Specification	Dent Grain, 16-18 Rows Seeds on Each Maize
Variety Specification	Hybrid, Triway Cross, Medium-maturing, High Primary Germination, High Yield, Dent Grain For Grain and Silage Production
Plant Resistance	Resistant to Environmental Stress and Diseases
Plant Density	Grain: 70000 to 80000 Plants per Hectare
	Silage: 70000 to 80000 Plants per Hectare



Squash ELLA (YZ2402)

Hybrid Squash, Ella Variety

Cylindrical Shape (Popular in the market)

Productive

Fruit: Greenish, Squash Hybrid with Very Strong Bush

Length Of Fruit: 14 - 17 cm

Resistance to *zucchini yellow mosaic virus* (ZYMV), *cucumber mosaic virus* (CMV) and Powdery Mildew (PM)

Continual Production with High compatibility to Environment Changes

Suitable for Cultivation in Open Field

Medium Maturing

High Density of Female Flowers





Eggplant ISABELLA (YE2325)



Hybrid Eggplant, Isabella Variety
Semi Round Shape (Black Beauty Type)
Productive
Early Maturing
Fruit: Shiny and Black Color
Hybrid with Strong Bush and High Cover
Low Seed without Bitterness and Pungent taste
Suitable For Cultivation in Open Field



Melon LUCY (YM2492)

Hybrid Melon, Lucy Variety
Galia Type
Very Resistant Bush and Suitable for Spring Cultivation
Early Maturing and High Yield
Shape of Fruit: Round
Weight of Fruit: 2 - 2.5 kg
Resistance: Good Resistance to *Fusarium* wilting race 0,1,2





Cucumber SOPHIA (YZ1359)

Hybrid Cucumber, Sophia Variety

High Resistant Bush and Suitable for Spring Cultivation

Shape of Product: Ploughed Slender

Fruit Size: 16 - 18 cm

Fruit Color: Dark Green







Website



Instagram

📍 No. 77, Adineh Group Building, North Sheikh Bahaei St,
Sheikh Bahaei Square, Molla Sadra St,
Tehran, Iran

📞 +98 21 8350 1236

📷 armansabzadine

🌐 armansabz.adinegroup.com